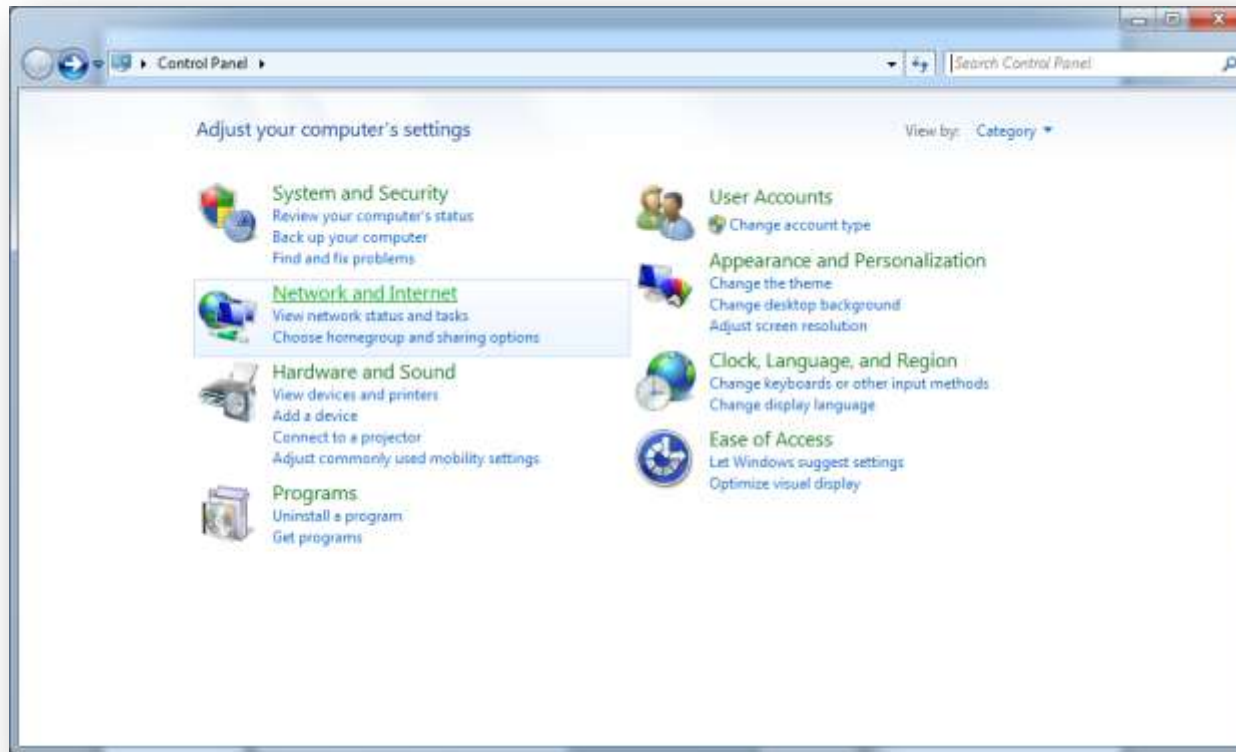
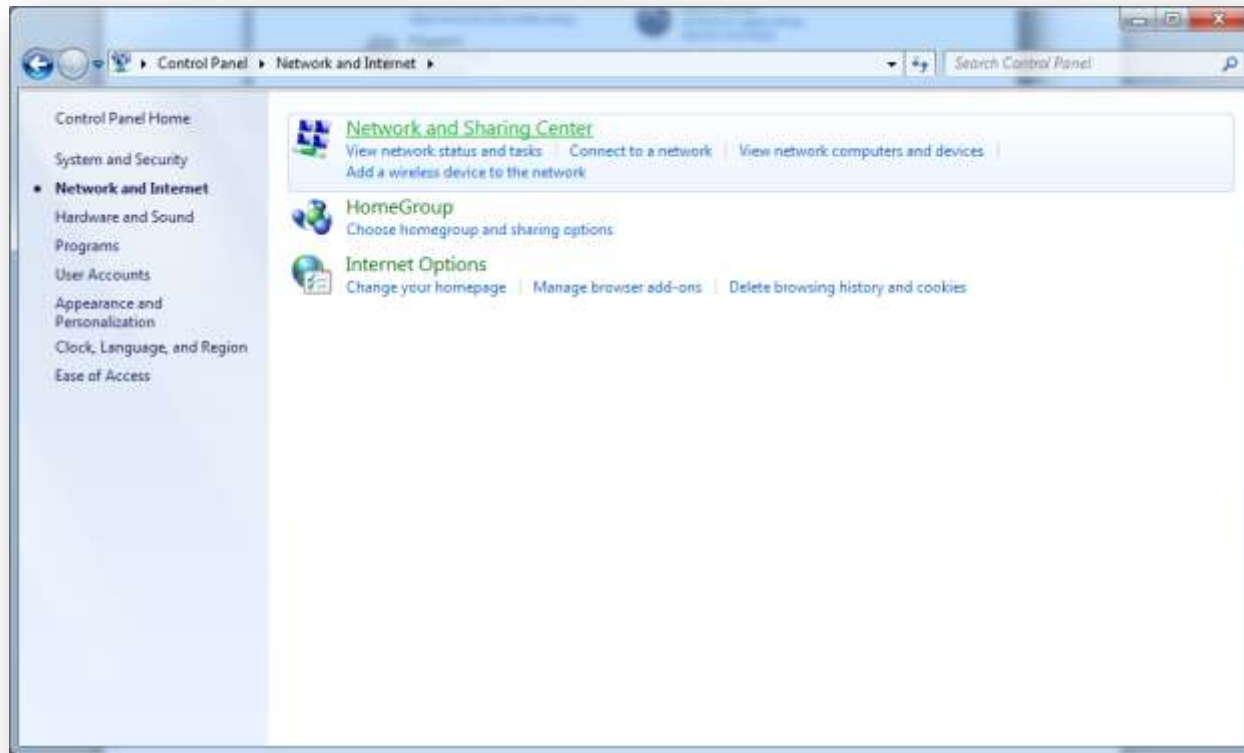


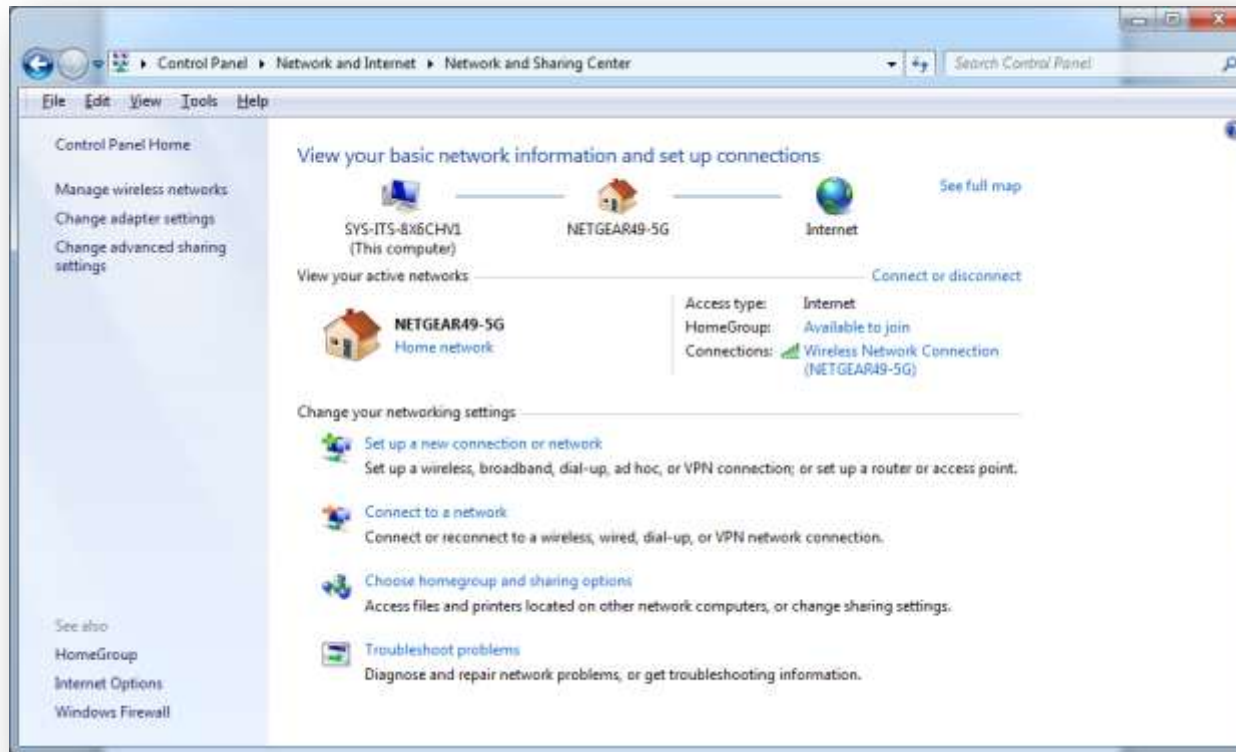
Click on the **Windows Start button** and choose **Control Panel**



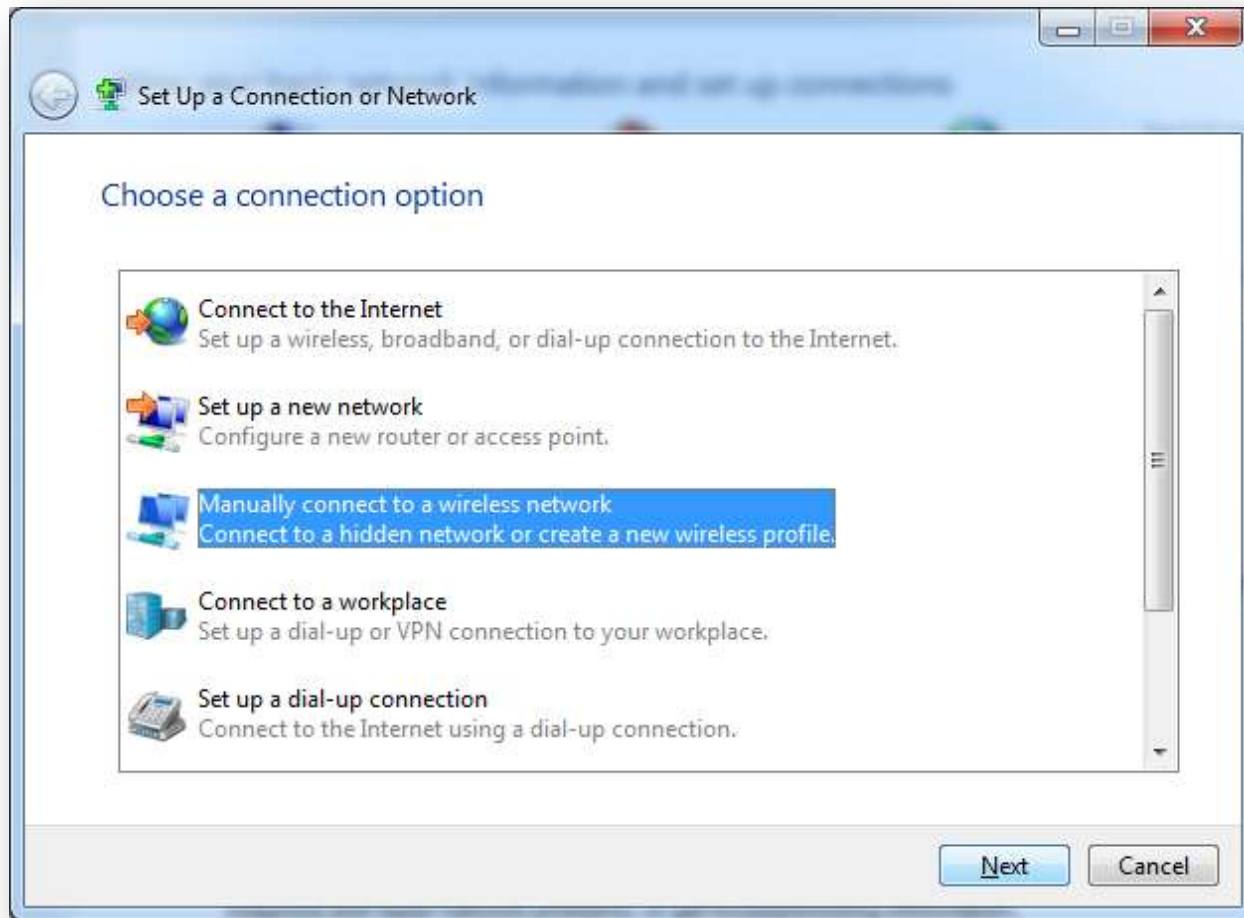
**Choose Network and Internet**



Choose **Network and Sharing Center**



Choose **Set up a new connection or network**



Choose **Manually connect to a wireless network** and click **Next**

Manually connect to a wireless network

Enter information for the wireless network you want to add

Network name: eduroam

Security type: WPA2-Enterprise

Encryption type: AES

Security Key:   Hide characters

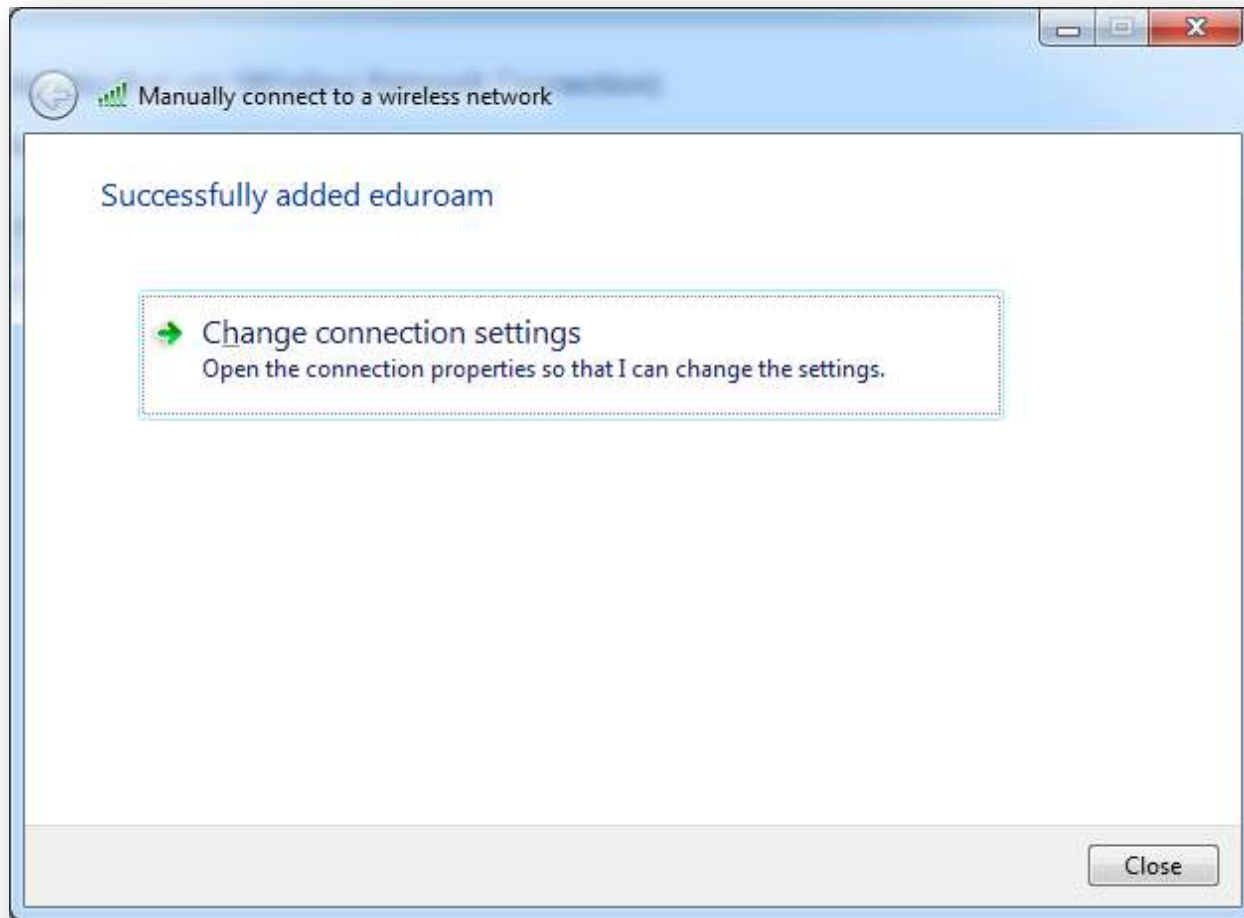
Start this connection automatically

Connect even if the network is not broadcasting

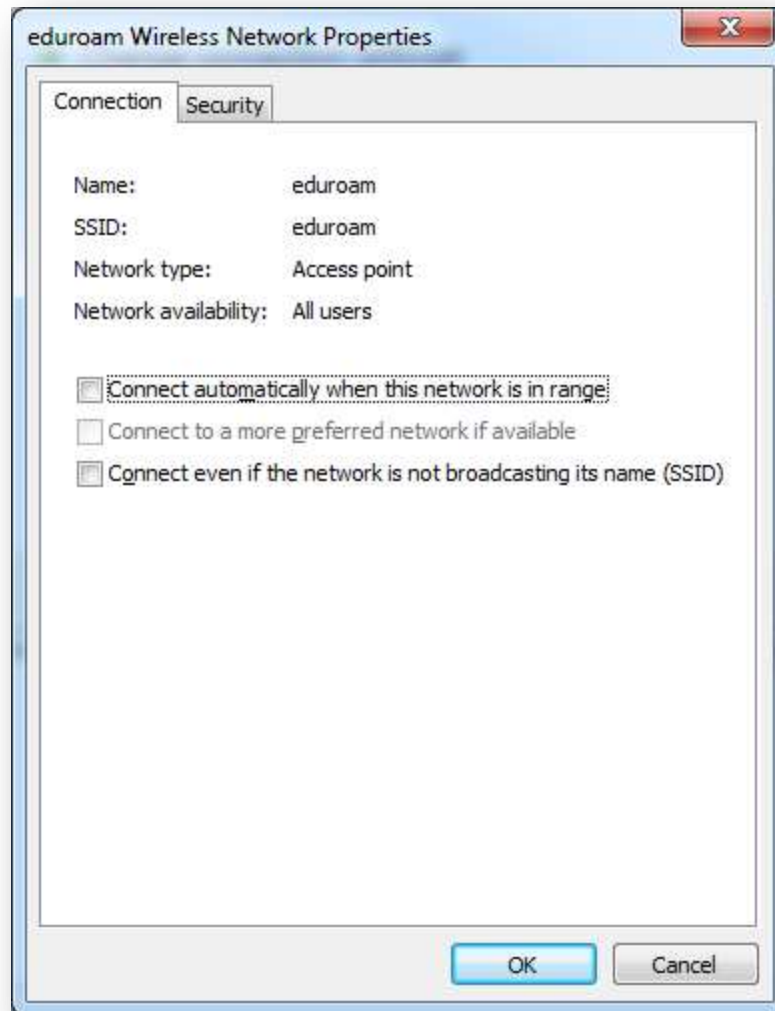
Warning: If you select this option, your computer's privacy might be at risk.

Next Cancel

Enter the information as shown above and click **Next**

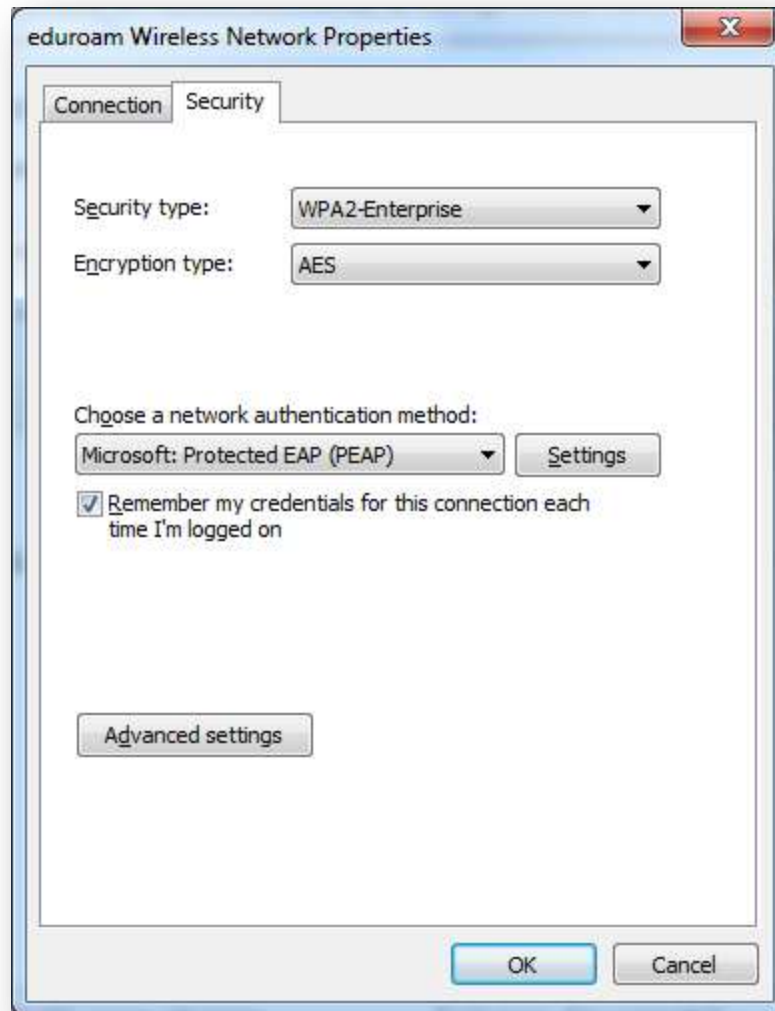


Choose **Change connection settings**

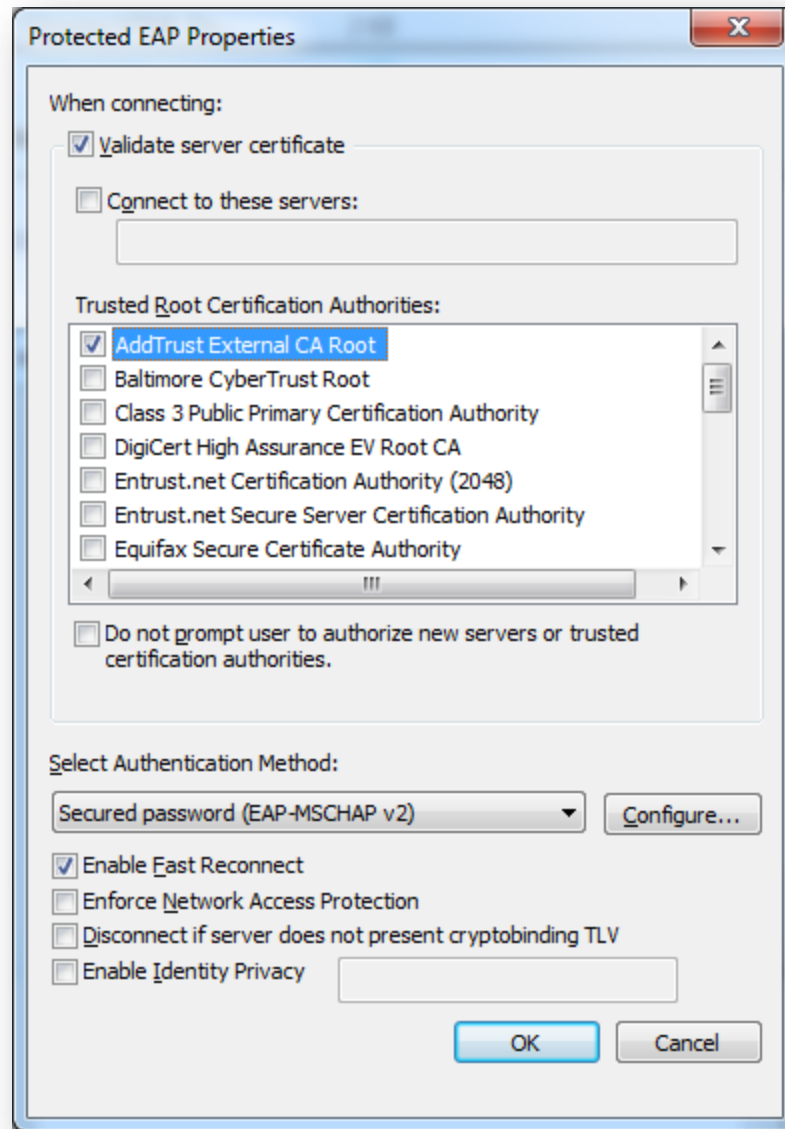


Click on the **Security** tab





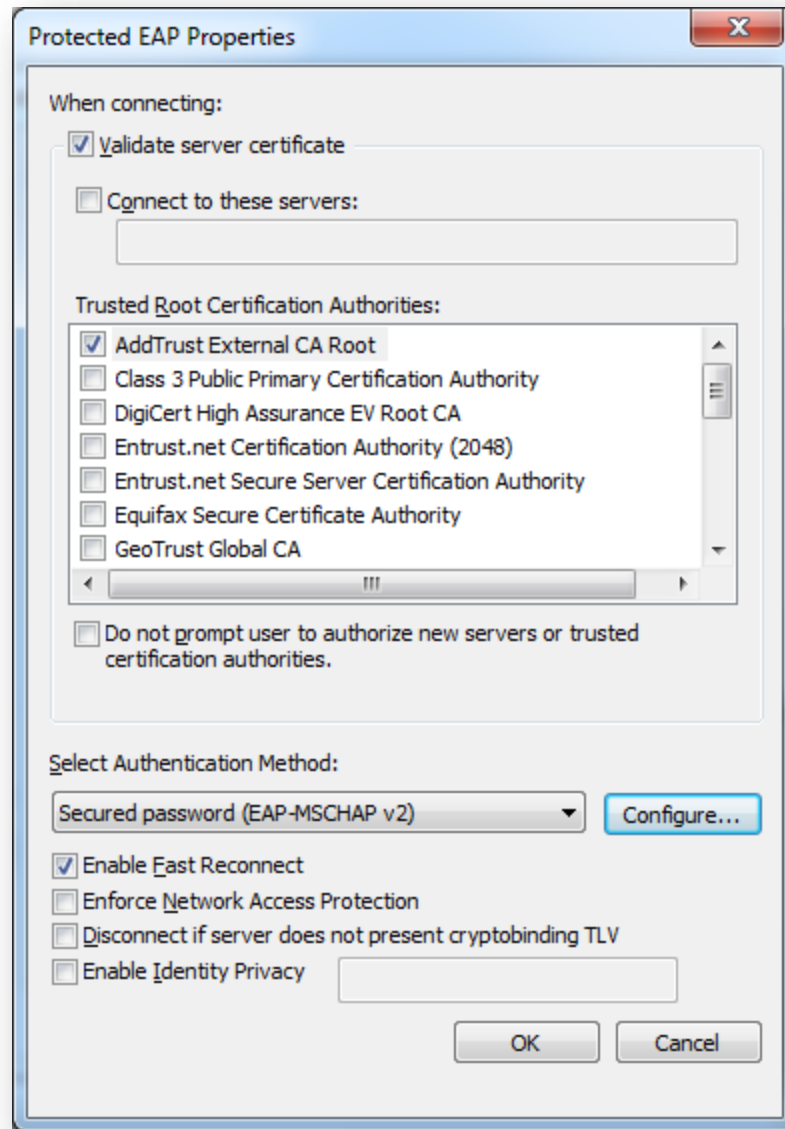
Click on the **Settings** button



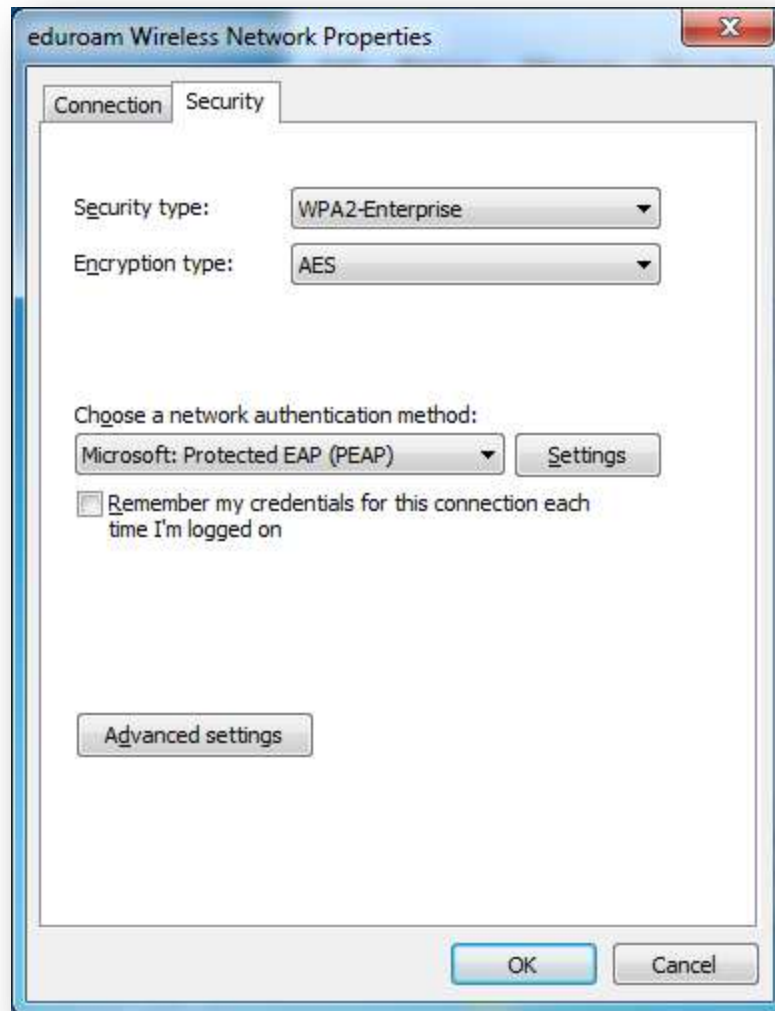
Check **AddTrust External CA Root** and then click the **Configure** button



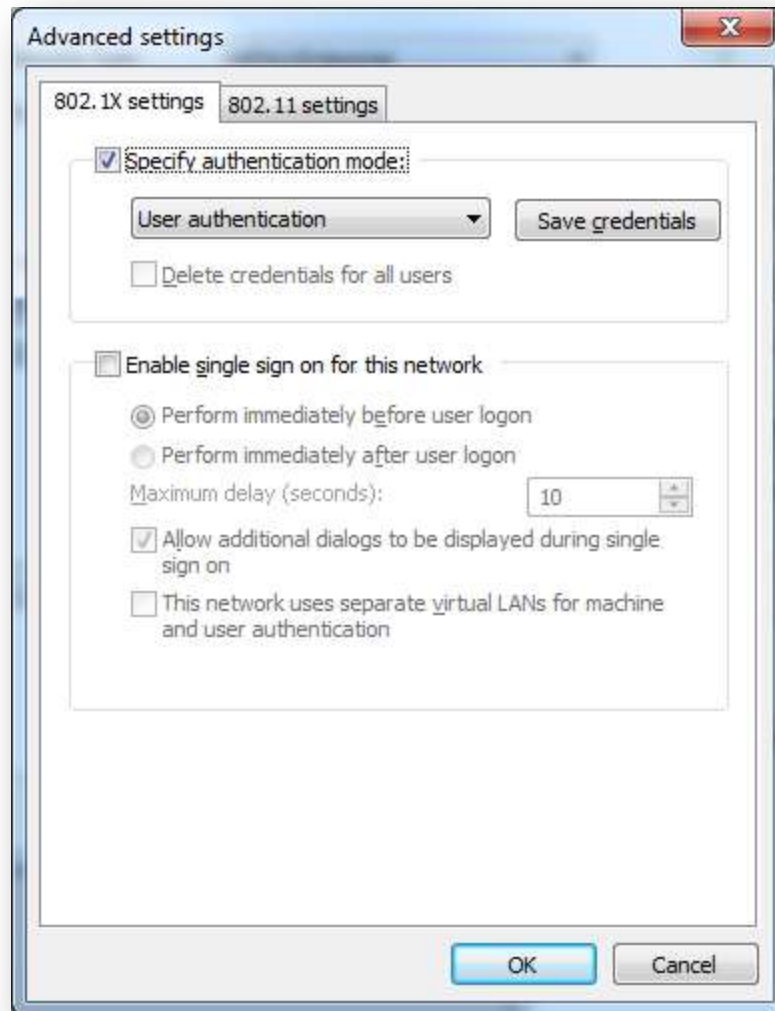
Uncheck the checkbox and click **OK**



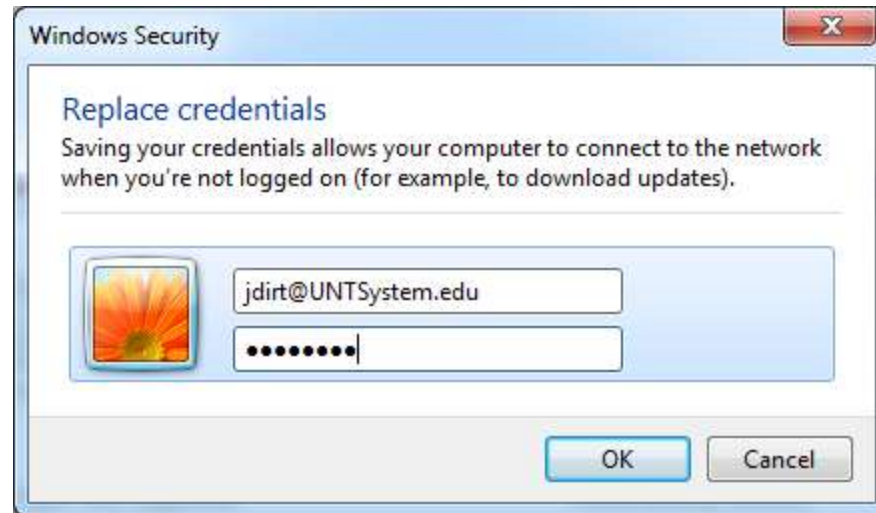
Click the **OK** button



Uncheck the **Remember my credentials** box then click the **Advanced settings** button



Check **Specify authentication mode** and select **User authentication** in the dropdown menu, then click **Save credentials**



Enter your username, in the form of EUID@yourdomain, and your password then click **OK**

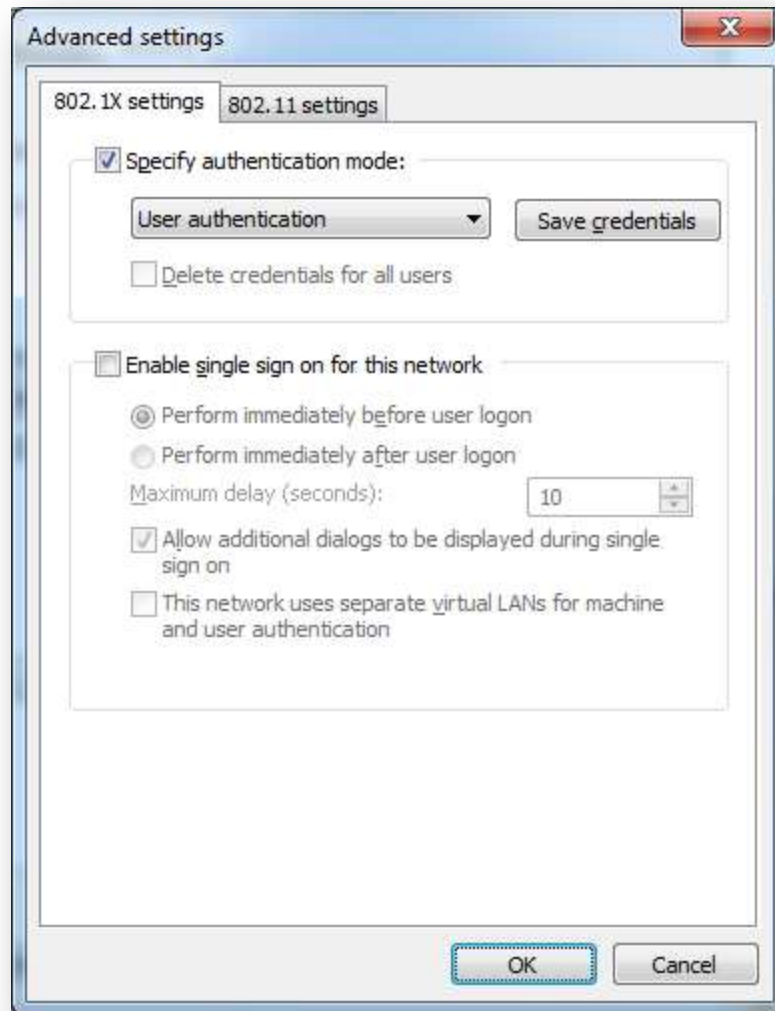
Our current valid domains are:

UNT.edu

UNTSysstem.edu

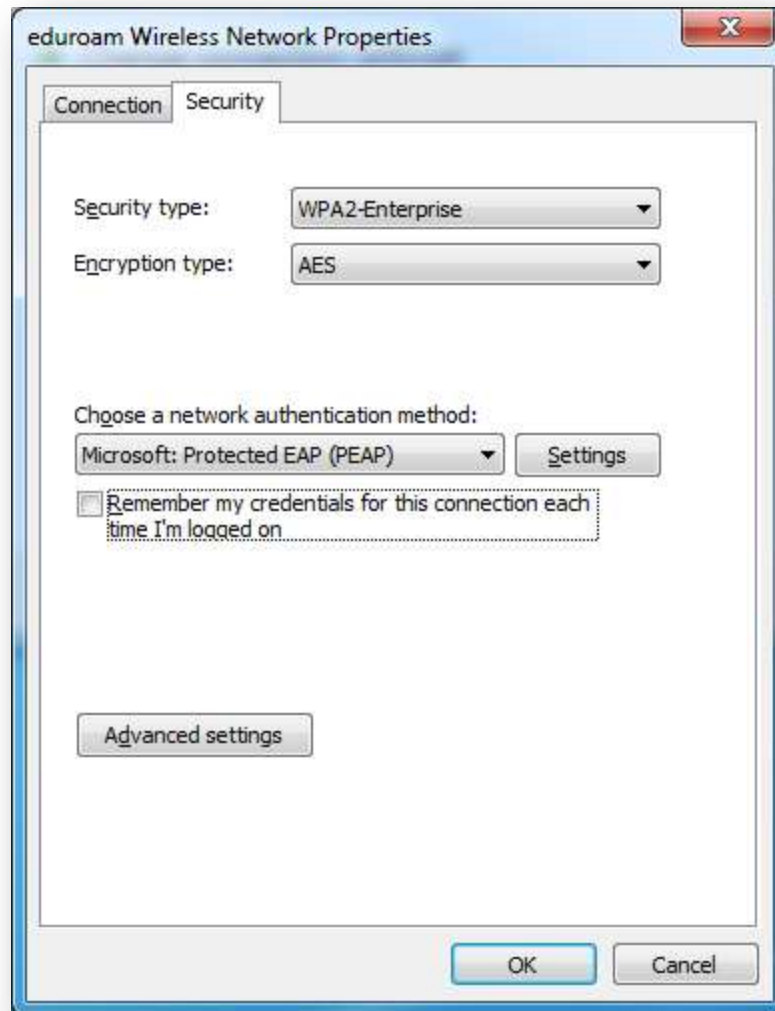
UNTDallas.edu

UNTHSC.edu

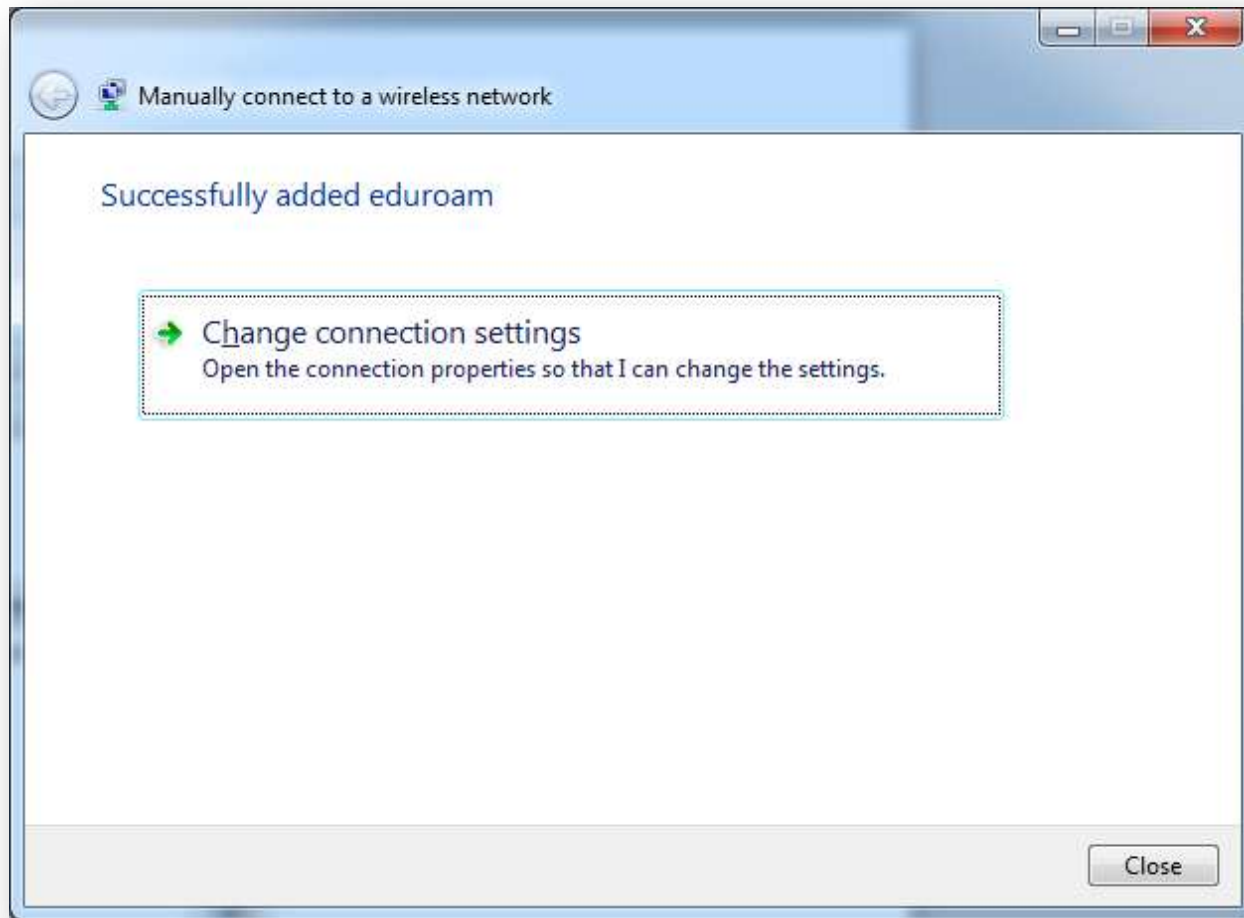


Click **OK**





Click **OK**



Click **Close**

You are now configured for eduroam!